

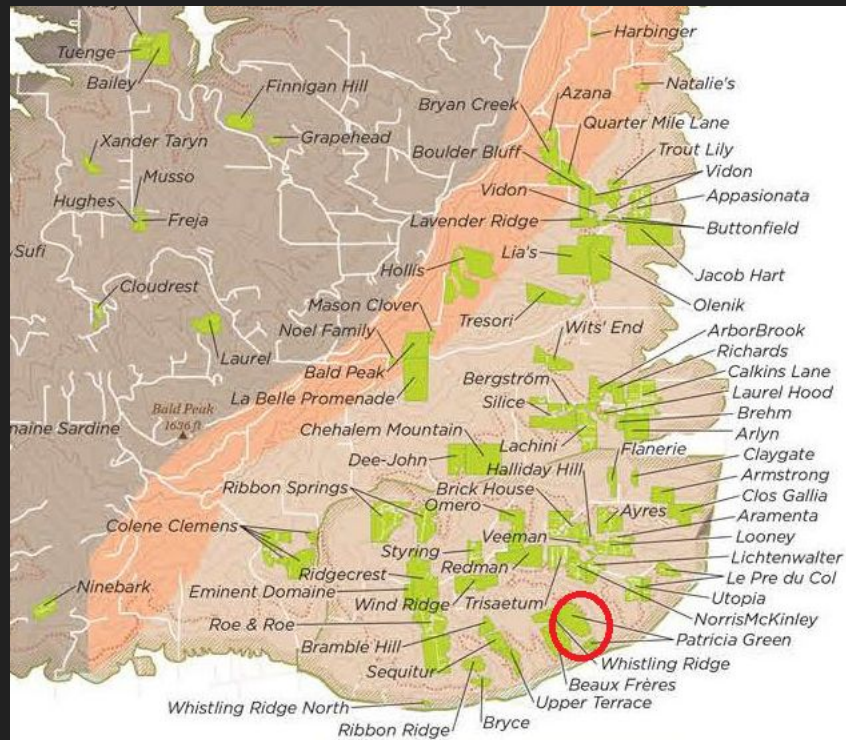
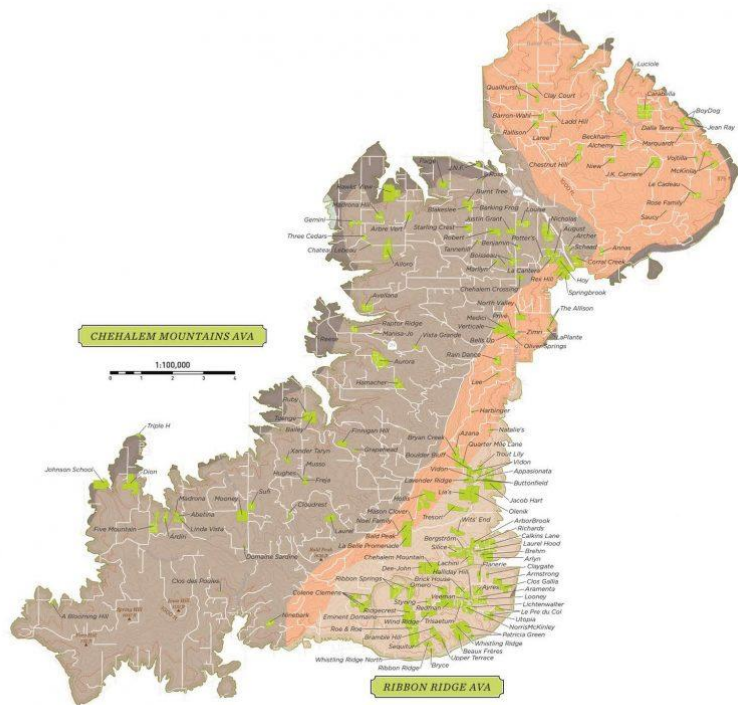


# Estate Vineyard

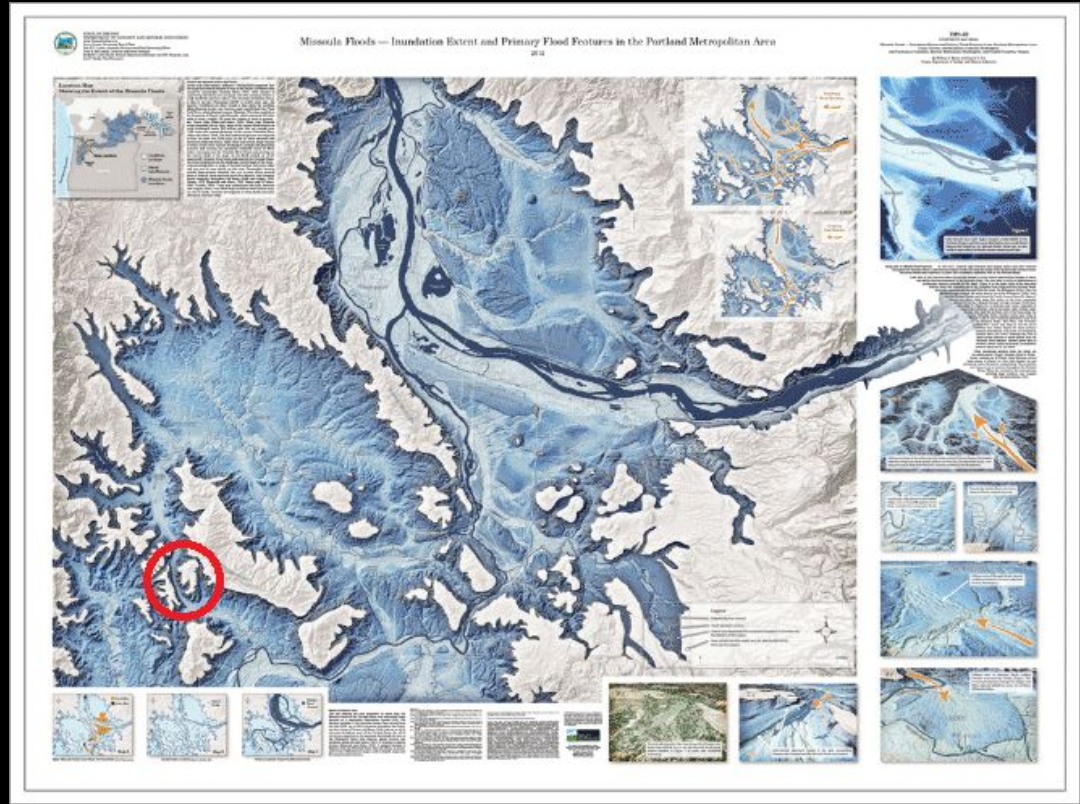
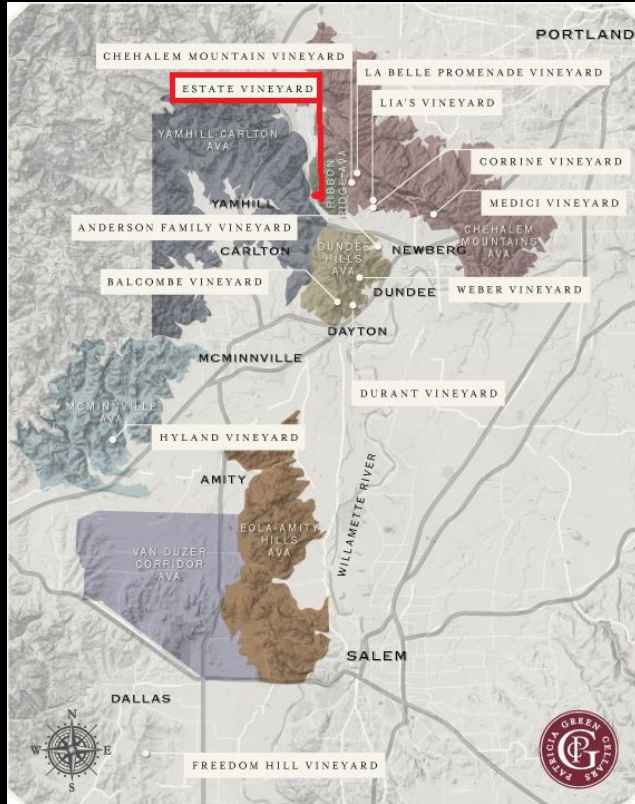
Featured Wines:  
2019 Estate Sauvignon Blanc  
2017 Estate Vyd, Etzel Block



# Ribbon Ridge / Chehalem Mountains



# Ribbon Ridge / Chehalem Mountains



Our Estate relative to our other vineyards / Missoula Flood Map clearly illustrates RR is actually separate from the rest of the Chehalem Mountains.

# Ribbon Ridge Characteristics

- Soil type is very fine (think talcum powder), well drained and prone to erosion. The subsoil is sandstone adds to the quick drainage, making for a growing environment that is tough on younger, developing vines, but excellent for older vines. The soils are so soft that the root systems become very deep, allowing the plant to find nutrients, minerals and water that are critical to vine health and, ultimately, wine complexity.
- Ribbon Ridge provides a consistent climate for ripening, with earlier starts to warming, less nighttime temp drops, and few heat spikes in midsummer. These conditions allow longer, cooler growing seasons.
- Ribbon Ridge's island-like characteristics and the proximity of surrounding land masses tend to shield and uniquely protect the viticultural area from many of the extremes that affect the other agricultural microclimates in the northern Willamette Valley.

# Estate Vineyard

- Planted starting in 1984, later plantings in '97 & 2000. +/- 30 acres under vine
- Early plantings are own-rooted, Patty's plantings are on rootstock
- Vineyard interplanted after we purchased because rows were too wide
- Peaks around 450' in a big dome with 360 degrees aspect
- Ancient Marine Sedimentary soils, 35mya (Wellsdale)
- Wines produced:
  - Estate (Pommard, Dijon 114 & 115, Wadensvil)
  - Estate Old Vine (Pommard - this can change)
  - Estate Bonshaw Block (Pommard)
  - Estate Etzel Block (Pommard, Dijon 114 & 115)
  - Estate Wadensvil
  - Estate First Vines (Pommard)
  - Estate Sauvignon Blanc
  - Chardonnay? Coury?

# 2019 Estate Vineyard, Sauvignon Blanc

SOIL TYPE: Wellsdale (marine sedimentary)

YEAR PLANTED: 1984

VARIETY: Sauvignon Blanc

VINIFICATION: fermented in stainless steel, aged in Acacia wood puncheons

At more than 30 years old, we believe these to be the oldest Sauvignon Blanc vines left in the Willamette Valley. The fruit has definitely developed over the years and has different and special characteristics that makes the wine stand alone and stand out. The Acacia wood elevage provides greater and rounder texture much in the way an oak barrel does with Pinot Noir, but rather than add the typical elements that a new oak barrel would, Acacia accentuates natural floral aromatics and definitely plays off any “lemony” flavors by concentrating them to a lemon meringue pie sort of flavor profile.

\*93 Points, Wine Enthusiast Editors' Choice



# 2019 Estate Vineyard, Sauvignon Blanc



# 2017 Estate Vineyard, Etzel Block Pinot Noir

SOIL TYPE: Wellsdale (marine sedimentary)

YEAR PLANTED: 1986, 2001

CLONAL MATERIAL: Pommard, Dijon 114

VINIFICATION: mostly 50% whole cluster fermentations

PICKING DATE: 10/05/17 and 10/08/17

TONS/ACRE: 3.49

Named for our neighbor Mike Etzel (it faces his property) of Beaux Freres who we wanted to honor for his contributions to this particular part of the wine growing region. We have been using elements from both the 1986 Pommard planting and the 2001 Dijon 114 planting since 2014 and it has resulted in strong wines with deep personalities. The younger vines are coming into a fun age where the wines, when done well, have a special, energetic quality. The older Pommard brings that nuanced, earthy, quartz-laced fruit to the table and the two combine in a way that is completely unique. Structured black fruit sets the tone in this wine with a tendency toward the earth driven shades finishing with an aromatic twist that is impossible to resist.

\*94 Points, Wine Enthusiast



# 2017 Estate Vineyard, Etzel Block Pinot Noir

