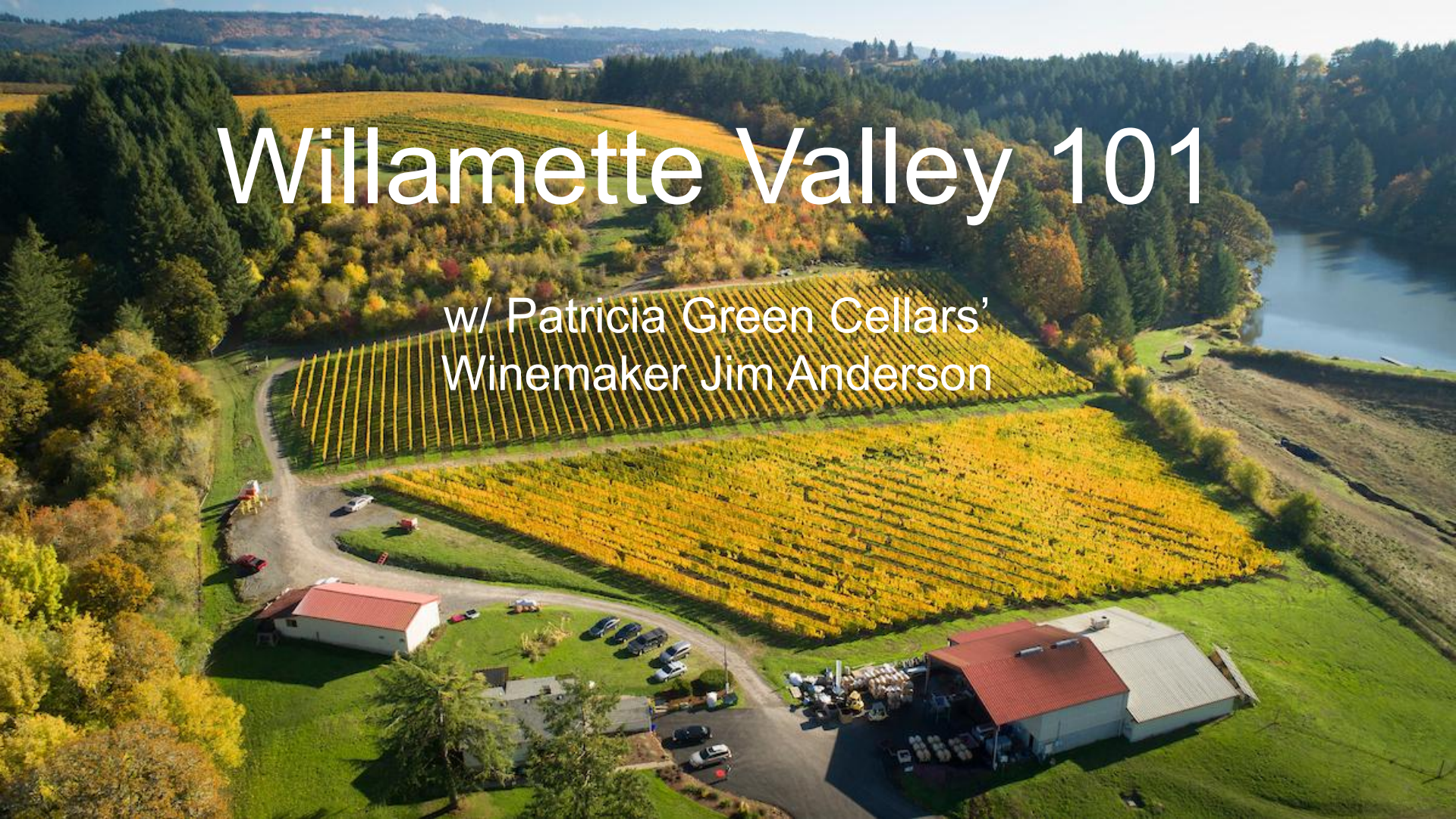


Willamette Valley 101

w/ Patricia Green Cellars'
Winemaker Jim Anderson



Fast Facts:

- Approx 150 mi long
- Temperate Oceanic climate (cool summers, wet winters, often overcast)
- 500+ Wineries
- 19,000+ acres of grapes
- 9 Sub-AVAs:
 - Chehalem Mountains
 - Dundee Hills
 - Eola-Amity Hills
 - Laurelwood District
 - McMinnville
 - Ribbon Ridge
 - Tualatin Hills
 - Van Duzer Corridor
 - Yamhill-Carlton



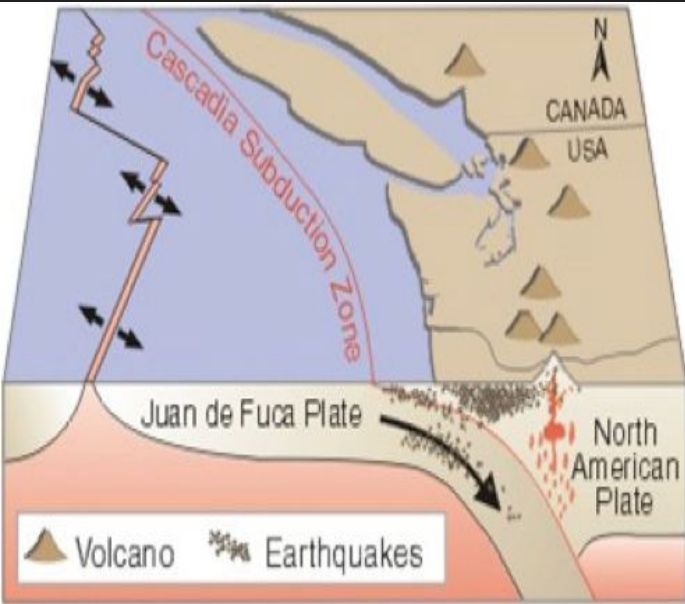
Historical Context

- 15-6 million years ago the Pacific Plate subducted the North American Plate
 - Kicked off volcanic era that gave us the Columbia River Basalt Flow
 - Chehalem Mountains, Dundee Hills, Eola-Amity Hills
- 18 - 15 thousand years ago (recent history): Missoula Floods
 - Filled the WV up like a bathtub, left behind deep, comparatively fertile sediments
- 1965 First Pinot Noir planted by David Lett of Eyrie Vineyards
- 1993 Patty starts as head winemaker at Torii Mor, hires Jim in '95
- 2000 Patty and Jim start Patricia Green Cellars
 - Organic, dry farmed vineyards, mostly own-rooted from the 70s/80s. Native yeast ferment, piegeage, minimal oak, unfiltered and unfinned.
- 2014 Jim's first vintage as head winemaker
- 2018 Patricia Green Cellars receives first 100 point score for Oregon Pinot

'Waves' of Soil Creation in the Willamette Valley:

Plates Collide

lifts up ancient ocean floor
marine sedimentary



Columbia River Basalt Flow

creates new parent material
volcanic



Missoula Floods

drowns basalt flow & buries under young sediments
marine sedimentary



*does not include wind-blown loess which is not on any of our vineyards

Volcanic v. Marine Sedimentary Soils

Volcanic:

“Younger” soils (15-6mya).

Iron-rich clay which holds water and nutrients better = richer wines.

Wines are generally red-fruited.

Marine Sedimentary:

2 types: ancient (35+/-mya from ocean floor) & missoula flood soil (18-15kya - not usually used for grapes).

Well-draining, nutrient deficient soils.

Generally darker (blue/black) fruited and very textural wines.

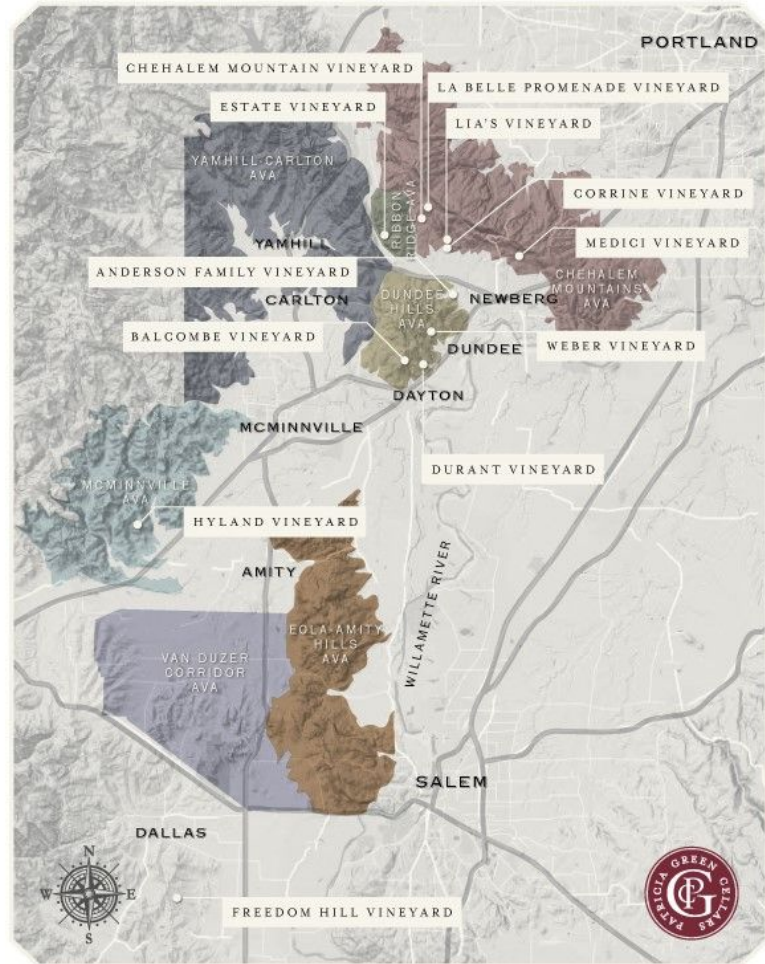
Volcanic Soil



Marine Sedimentary Soil



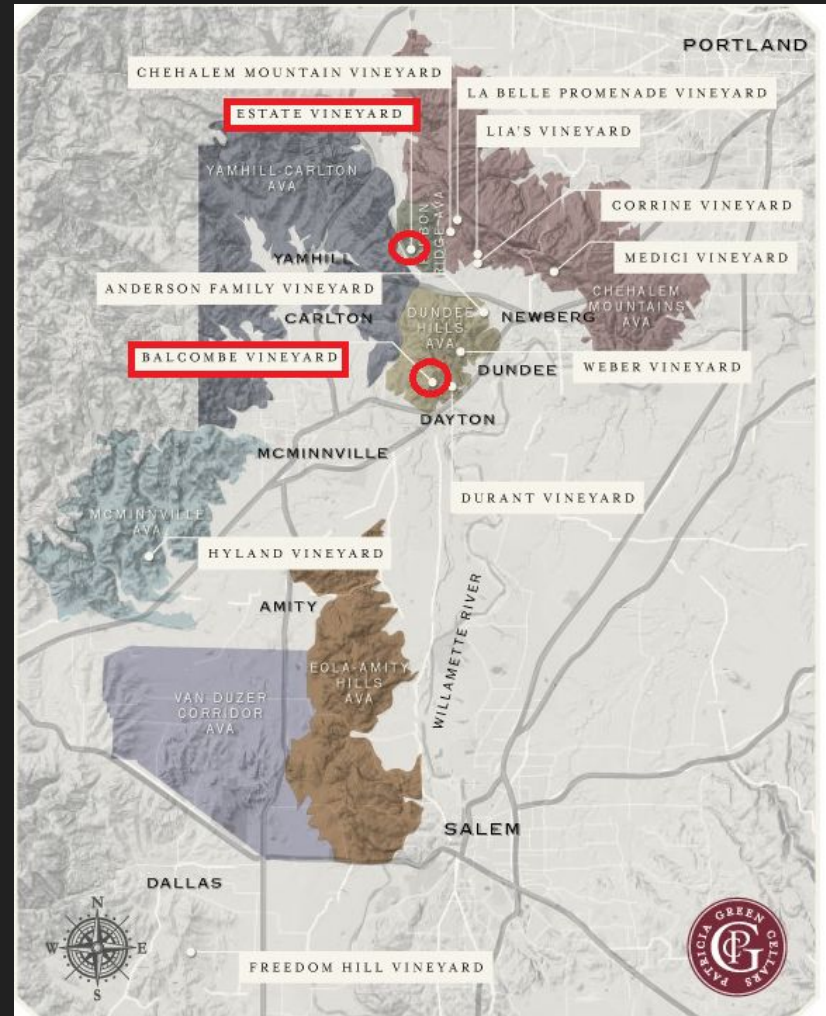
Vineyards we source fruit from in the Willamette Valley



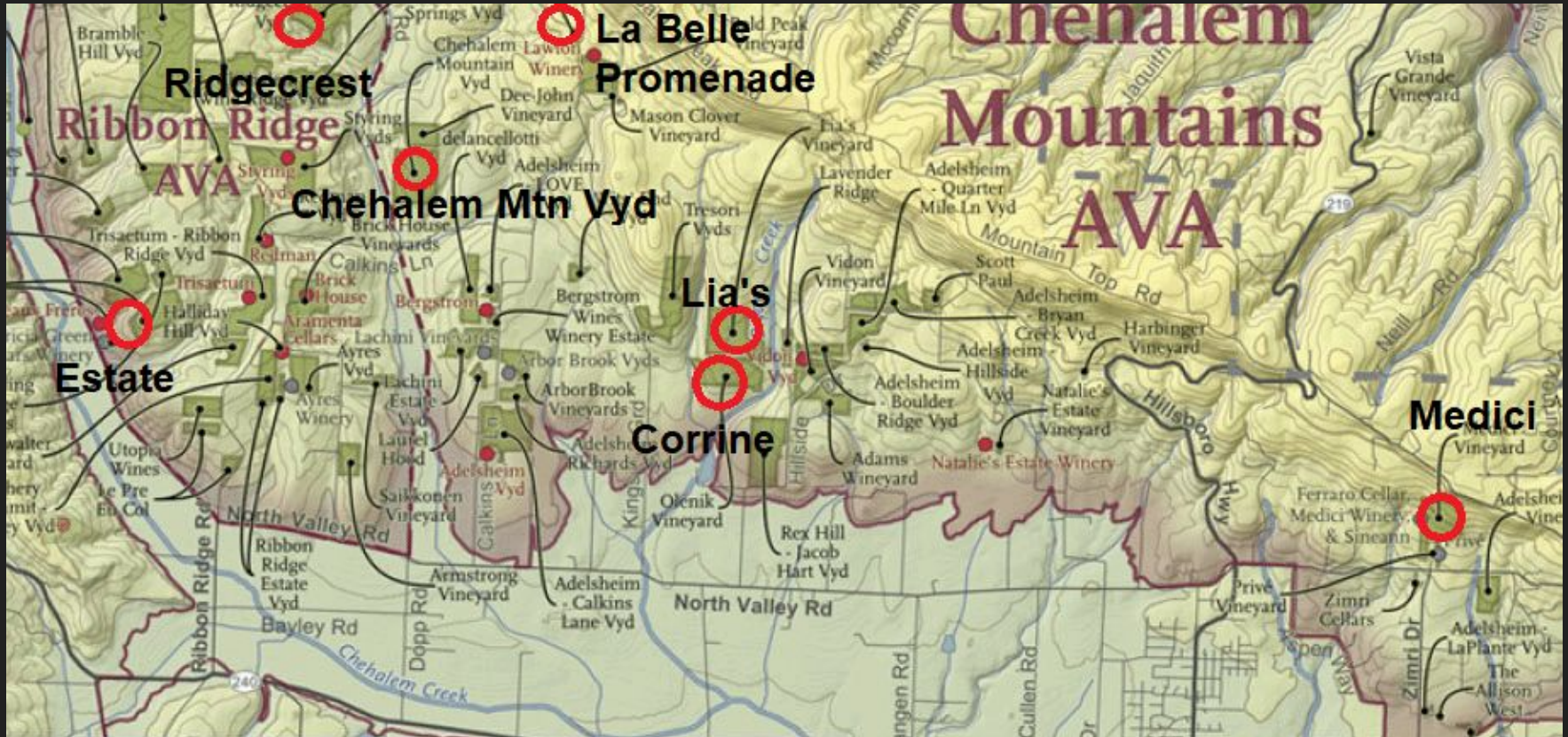
Vineyards We Farm:

Estate - 30 acres on
Ribbon Ridge

Balcombe - 7.25 acres
in Dundee Hills



Chehalem Mountains Vineyards



Chehalem Mountain Vineyard



Corinne Vineyard



Estate Vineyard (also Ribbon Ridge)



La Belle Promenade Vineyard



Lia's Vineyard



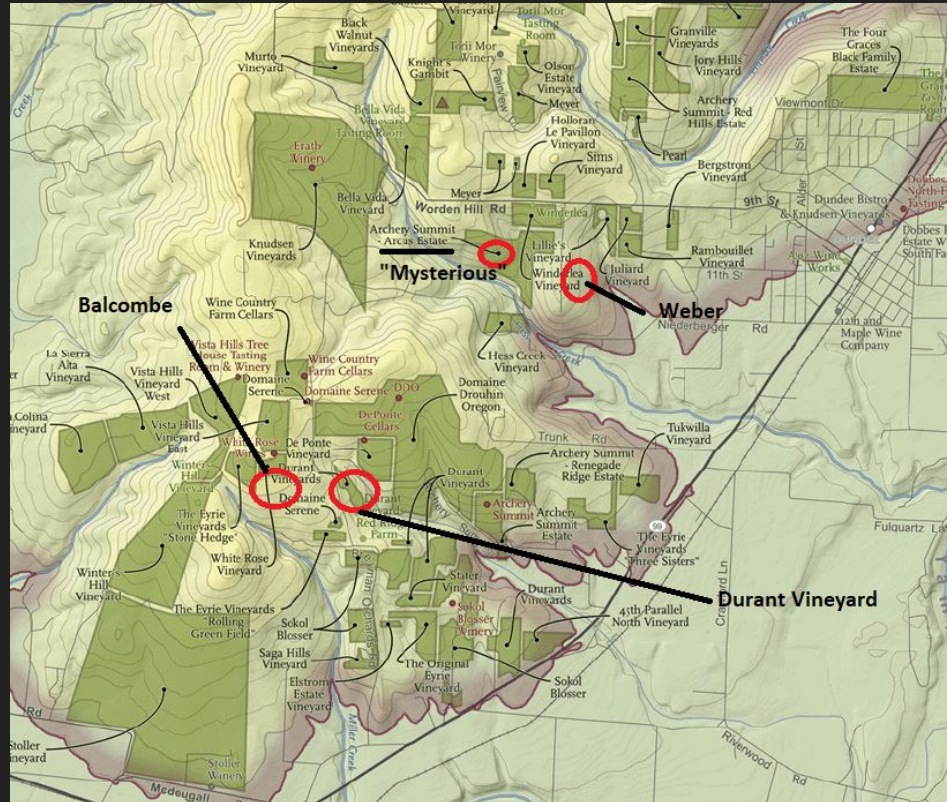
Medici Vineyard



Ridgecrest Vineyard (also Ribbon Ridge)



Dundee Hills Vineyards (non-exhaustive)



Anderson Family Vineyard



Balcombe Vineyard



Durant Vineyard



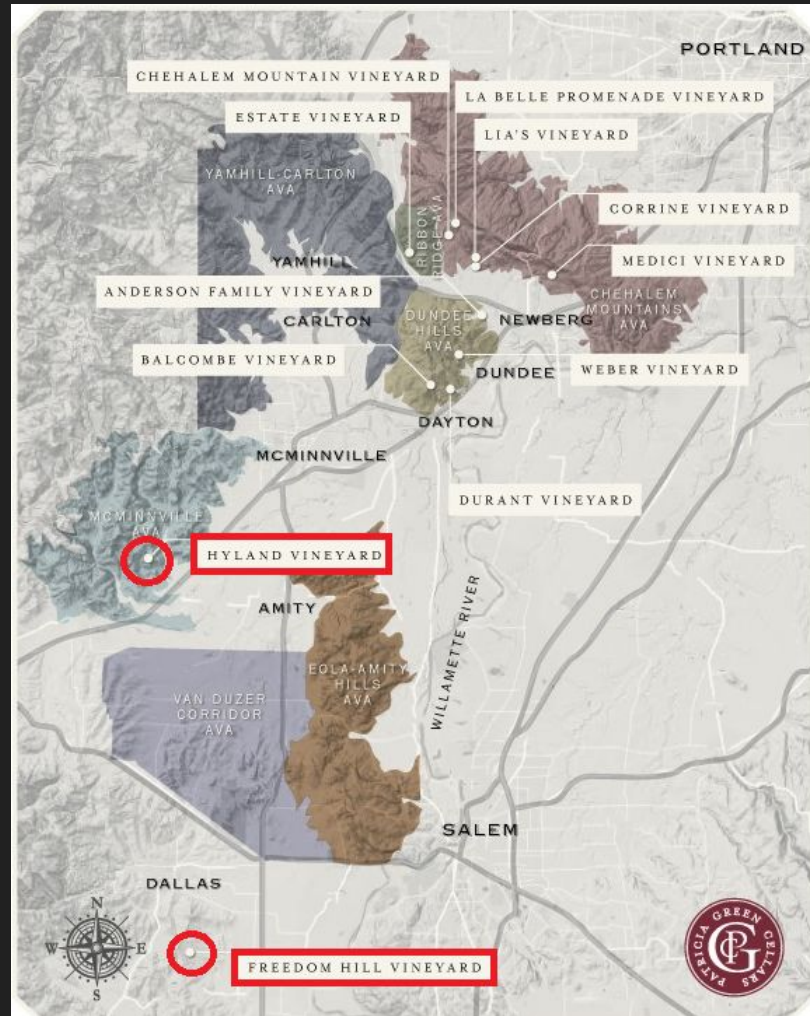
“Mysterious” Vineyard



Weber Vineyard



McMinnville AVA & soon-to-be Mount Pisgah AVA



Hyland Vineyard



Freedom Hill Vineyard

